



Arrival Guide

Spring 2025

Graduate Students



CONTACT INFORMATION

Global Education Office (GEO)

Hours: Monday – Friday 8:00 AM-5:00 PM

Location: 2120 Mesa Vista Hall (UNM [Central Campus Map](#) - Building #56)

International Advisors Email: iadvisor@unm.edu (orientation, arrival, and immigration questions)

International Admissions Email: goglobal@unm.edu (transcript, application and scholarship questions)

GEO General Email: geo@unm.edu (hours, appointments, general questions)

Phone: 505-277-4032 GEO: global.unm.edu International Admissions: International.unm.edu

Web Info for International Students: iss.unm.edu; [New ISSS Lobo Web Info \(click me\)](#)

Social Media: [MS Teams](#) for incoming students (join instructions on last page)

[UNMGlobal Community](#)  ask to join FB Group

UNMGlobal Instagram 

Hello New International Graduate Student!

Congratulations on your acceptance to the University of New Mexico (UNM) for **Spring 2025**! We are writing from the International Student and Scholar Services (ISSS) Unit of the Global Education Office (GEO). ISSS provides services for all international students at UNM. We are excited to welcome you as a new member of our global Lobo family!

The GEO office is located at 2120 Mesa Vista Hall, directly east of the Student Union Building (SUB) in building #56 on the UNM [campus map](#). ISSS advisors in GEO can answer questions you have about orientation, visa, immigration, travel, and work requirements. We also organize many events for international students.

Arrival information and videos for new students are under the *Student* tab and *Coming to UNM* on our website at: <https://iss.unm.edu>.

Review this website and the enclosed information NOW to be sure you are aware of all mandatory arrival dates and requirements.

All graduate international students beginning studies in Spring 2025 are REQUIRED to arrive at UNM BEFORE Wednesday, January 15th to complete mandatory check-in and in-person orientation. If you will live off campus you should plan to arrive by January 7th to find housing and complete all requirements before classes begin. A recommended arrival schedule is included in this arrival guide.

Late arrivals MUST be reported in writing to iadvisor@unm.edu and be approved in advance! You CANNOT arrive late without permission and will not be able to arrive more than one week late UNDER ANY CIRCUMSTANCES! Please email us if you have questions.

We look forward to meeting you and assisting you with your needs as an international student!

Sincerely,



Phillip Gill
International Advisor



Fiore Bran-Aragon
International Advisor



Melissa Aragon
International Advisor



Linda Melville
Director, International Student and
Scholar Services

CONTENTS:

I. Required Arrival Dates and Details

- a) *When to Arrive*
- b) *Orientation Requirements*
- c) *Check-in Requirements*
- d) *Vaccination Requirements*

II. Arrival & Housing

- a) *How to Get to Campus*
- b) *Airport Pick-Up & Temporary Housing*
- c) *Long-term Housing Options*

III. Immigration and Visa Issues

IV. Preparing to come to UNM

- a) *Health Insurance Requirements*
- b) *What to Do Before You Leave Home*
- c) *Connecting with Other Incoming Students*

V. Registration for Classes & Tuition and Fee Payments

- a) *Registration for Classes*
- b) *Setting up Your UNM Net ID*
- c) *Tuition and Fee Payments*

VI. Pre-Arrival Checklist

I. Required Arrival Dates and Details

a) When to Arrive

Recommended Arrival Schedule:

January 6-14: Arrive in Albuquerque (you should arrive as early as possible if you plan to live off campus).

January 6-15: **Attend MANDATORY GEO post arrival check-in**, find housing, visit department, find classes

January 16: **Attend MANDATORY International Orientation from 8:00 am to 3:00pm**

January 16-20: Finalize class schedule, explore campus, attend fun events

January 20: Dr. Martin Luther King Jr. Holiday (No Classes)

January 21: Begin classes

The date you arrive is CRITICAL for a smooth transition to student life! You **MUST** arrive in Albuquerque **before Wednesday, January 15** – **No late arrival is allowed**. More details will be communicated to you at the GEO pre-arrival orientation on Zoom on December 13 (details below).

b) Orientation Requirements

ALL Graduate International Students must attend 3 types of mandatory orientations.

ALL 3 ARE REQUIRED!

TYPES OF ORIENTATIONS FOR GRADUATES:

GEO Orientations (REQUIRED):

- 1. GEO PRE-ARRIVAL ORIENTATION ON ZOOM: Friday, December 13, 8:00 – 10:00 AM Albuquerque time.** Prior to this meeting, you must set up your [UNM NETID](#), wait 1 day, and then access materials on our [MS Teams for new students](#). There is a lot of material to review on the team. Review it now to be prepared for the meeting on Zoom here.

<https://unm.zoom.us/j/91515615681>

Meeting ID: 915 1561 5681

Passcode: GEOlobo

- 2. GEO CHECK-IN IN PERSON: Come to a session between January 6-10 and 13-15 at 9:30 am** (at the GEO office 2120 Mesa Vista Hall).

- 3. GEO POST-ARRIVAL ORIENTATION IN PERSON: Thursday, January 16th, 8:00 – 3:00**

Other Orientations:

GRADUATE DEPARTMENT ORIENTATION: Some departments will have their own orientation. Ask your graduate department for details.

UNM GRADUATE STUDENT ORIENTATION: Optional following GEO In-person orientation. Details posted at: <https://ctl.unm.edu/graduate-students/graduate-orientation.html>.

c) Check-in Requirements

1. **Check-in Session:** You MUST attend one check-in session after arrival at UNM and prior to in-person GEO orientation. Check-In sessions will be weekdays from January 6 - 15 at 9:30 am (about 2 hours long). Call or come to GEO when you get to Albuquerque to sign up for the soonest check-in session. Bring a laptop and digital copies of your passport and immigration documents.
2. **Mygeo portal set-up:** After the Zoom pre-arrival orientation on December 13th, you will receive an invitation to create your **mygeo** portal account to begin the check-in process. Prior to arrival you should log in to your account to upload required immigration documents and update emergency contact and other information. You will complete GEO check-in requirements after attending a check-in session at UNM.
3. **Check-in Completion:** As soon as possible, but no later than the first week of classes you must complete check-in requirements. This means providing this information in your **mygeo** portal:
 - Scanned copies of all immigration documents –download a scan app; photo files are too large. You will scan passport, visa and I-94 or I-797 approval notice showing your status
 - Proof of **long-term** health insurance coverage (requirements below)
 - Emergency contact information
 - Local residential address and phone

d) Vaccination Requirements

Bring all vaccination records with you to the UNM. They will be required ONLY if there is an outbreak.

II. Arrival & Housing

a) How to Get to Campus

If you will not be picked up from the airport, Uber/Lyft to UNM and to hotels near campus are relatively inexpensive. Bus #50 goes from the airport to the UNM campus in 10 minutes. Ask the bus driver to let you off at UNM (the intersection of Yale and Central Avenues).

Students moving in to UNM campus housing need to make sure they arrive during pre-arranged move-in times. Check your move-in information and contact housing@unm.edu for questions about where and when you can move in.

b) Airport Pick-Up & Temporary Housing

○ **UNM Student Group Pick-up**

UNM student groups sometimes provide airport pick-up and temporary homestays for new students. Check the UNM Student Activities website at <http://sac.unm.edu/index.html> under [Student Orgs](#) to see if there is a group from your country and if so, email the contact to see if they offer this service to new students.

○ **Airport Pick-up and Homestay Offered by ISI (Local Community Christian Organization – NOT UNM)**

A non-UNM, community Christian volunteer organization called ISI (International Students, Inc.) offers free airport pick-up and a temporary homestay with a local family usually lasting no more than 3 days. **This service is free.** ISI is a Christian Organization. However, there is no obligation to participate in any religious activities (please report to GEO if you feel any pressure from ISI volunteers to participate in religious activities). If you are interested in airport pick-up or the home-stay opportunity offered by ISI, please complete the [ISI service request form](#) on their website (isiabq.org/services) or contact them at: ISIABQ@isionline.org. ISI airport pick-up and homestays for students arriving for **Spring 2025** will begin at the beginning of January. You must contact ISI at least two weeks in advance of your arrival for the best chance of getting a homestay placement. ISI also offers house-hunting help, free furniture, cell phone sign-up, free lunches and other services at their International Welcome Center in the two weeks before classes begin. The Welcome Center is at 401 University Blvd. on the northwest corner of Martin Luther King Jr. Dr across from the UNM campus.

○ **Living on Campus: Where to Stay Until You Can Move into Student Housing**

Move in day for on-campus housing is Friday, January 17th (**Subject to change). If you will live at Lobo Village or Casas del Rio (privately managed housing) please check with them for Move in dates. For housing questions, contact UNM Residence Life and Student Housing at housing@unm.edu or 505-277-2606.

○ **Living Off Campus: Where to Stay Until You Can Move into Long-term Housing**

If you will not live in UNM campus housing, OR you will arrive before you can move into your campus housing, you will have to find temporary housing off campus. You can use the ISI homestay, local hotels (ask for a UNM student discount) or Airbnb until you can move into long-term housing.

c) Long-term Housing Options

There are advantages and disadvantages to living on campus and off campus that you should consider carefully before you decide where to live. In general, we do not recommend on campus housing for graduate students. **Please read the [Housing Guide](#) for more information and check the housing section of our website.** Remember, the full semester charge for housing is due the month you move in!

To view UNM campus housing options, visit <http://housing.unm.edu/> and sign up as soon as possible to have the best chance at getting housing, but you **MUST** cancel if your plans change, or you will be charged!

Regardless of the housing option you choose, **you need to be prepared to pay for temporary housing when you first arrive**, use the ISI volunteer temporary homestay service listed above, or contact students

from your home country for a temporary place to stay. ISI offers permanent off-campus house-hunting help at their international welcome center before classes begin.



III. Immigration and Visa Issues

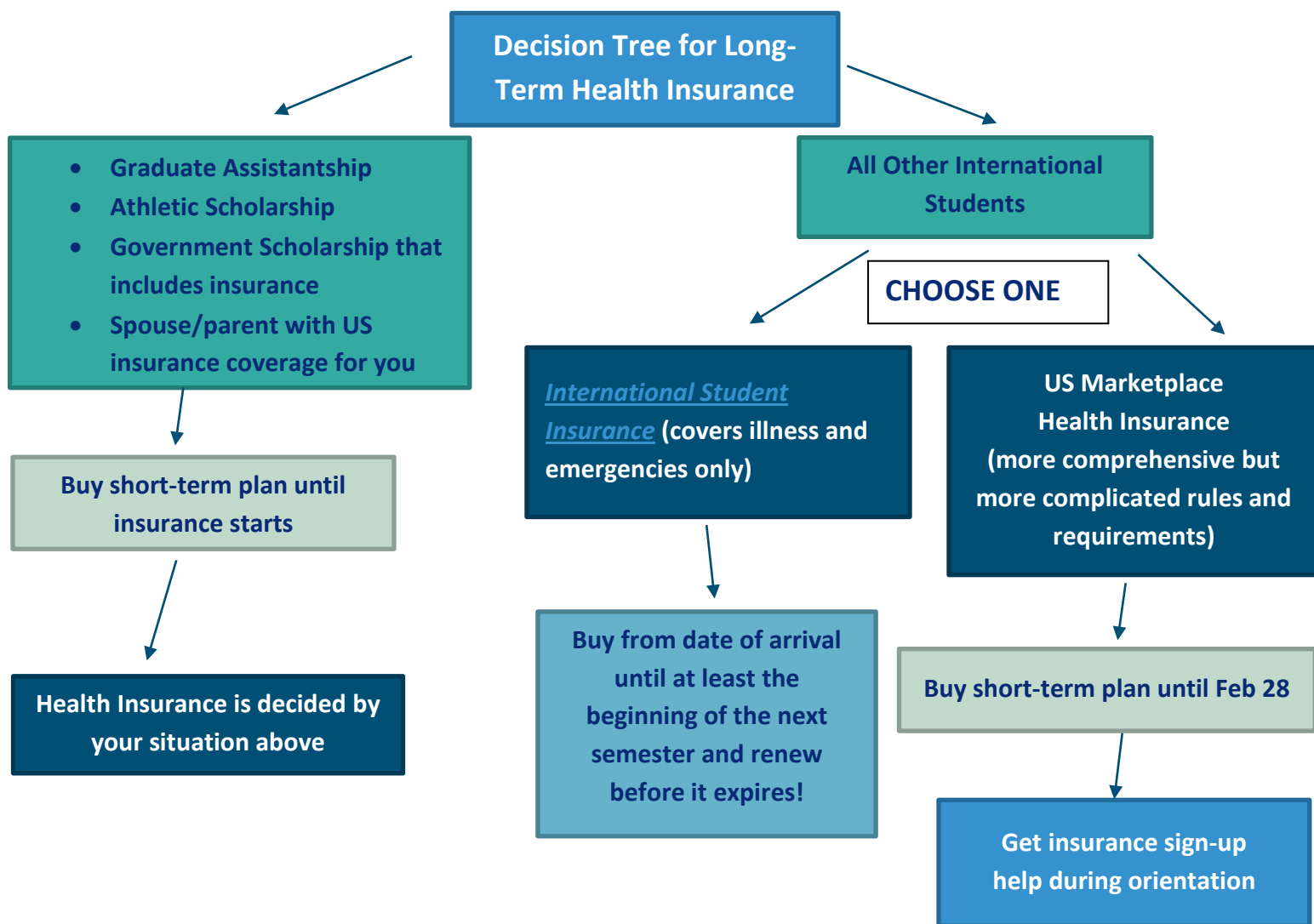
You have informed international admissions that you are not on a student visa and you do not intend to change to a student visa at this time. You should be aware that some visas have restrictions on study at the University level and that you will not be able to work at UNM unless you are on a student visa or have work permission as a part of your current visa. Should you decide that you want to change to a student visa or have questions about study restrictions on your current visa, please [make an appointment](#) to meet an international advisor or ask at GEO check-in.

IV. Preparing to come to UNM

a) Health Insurance Requirements

ALL UNM International students are required to have health insurance for their entire stay in the U.S. and health insurance rules are COMPLICATED! Health Insurance in the U.S. covers some medical expenses ONLY. Dental and vision care are extra and not covered by most health insurance, so you should take care of any vision or dental needs before you come. The [UNM Student Health and Counseling Center](#) provides lower cost medical services to all UNM students. **READ more about [health insurance on our website](#).** If you have US health insurance through your spouse or parent, you will be asked to provide this insurance proof at check-in.

TAKE CARE OF EXISTING HEALTH PROBLEMS AND GET REQUIRED PRESCRIPTIONS BEFORE YOU LEAVE HOME!



b) What to Do Before You Leave Home

- **DOCUMENTS**

- Download a scanning app and scan all your important documents in pdf format before you come to UNM and have access to these copies electronically (scans not images). These include passport, visa, proof of immigration status (I-94 or I-797), and official transcripts.
- Give family or friends at home access to these copies in case you need someone to send them to you.

Remember, you must bring the originals of most of these documents with you to UNM.

Certified original copies of your birth certificate may be necessary for a driver's permit or state ID.

- **MEDICAL**

- Get copies of all immunization records (currently ONLY required if there is an outbreak)
- Bring prescriptions for any regular medications (plus several months' worth of these medications)
- Get extra eyeglasses if you need them – these are expensive in the U.S. and are usually not covered by insurance
- Get your dental work done – dentistry in the U.S. is expensive and not covered by insurance
- Bring proof of health insurance

- **FINANCIAL**

- You should have access to approximately \$5,000 U.S. to cover initial costs.

c) **Connecting with Other Incoming Students**

- **WEBSITE:**

- Detailed information and videos regarding arrival are available on our website at <https://iss.unm.edu/students/coming-to-unm/arrival-resources.html>. Please review this information in detail before you come to Albuquerque.
- Download our [New ISSS Lobos Linktree](#) on your phone for fast access to information.

- **SOCIAL MEDIA:**

- **MS Teams:** Request to Join our [GEO New Students Team](#) AFTER you set up your NetID. We will be using this team to post important information for incoming students!
- **Facebook:** Ask to be added to the [UNM Global Community](#) Facebook group to communicate with other students or see our events.
- **Instagram:** follow us at **UNMGlobal**

V. Registration for Classes & Tuition and Fee Payments

a) Registration for Classes

You will have a **GEO registration hold** that prevents you from registering for classes that **BEGINS on January 1st**. You can register before this date, but after January 1, we cannot remove the GEO hold until you check in with the Global Education Office. Your department may also add a hold that prevents you from registering. All holds must be lifted by the department that placed the hold before you can register or update your registration. To find out what hold you have follow the directions [here](#).

Graduate students should meet with an academic advisor from their department before deciding on classes and should be sure they are registering for classes at the Albuquerque/Main campus. All registration is done online by logging in to <http://my.unm.edu> with your UNM Net ID (see below) after your holds are lifted.

b) Setting up Your UNM Net ID

If you have not already, you must [create a UNM NetID](#). You will be asked for your Banner ID (student ID#), Birth Date, First and Last Name. Follow the instructions to create a Net ID. To log in to UNM systems, you will need to complete **Multifactor Authentication** using the *Microsoft Authenticator App* OR a phone number you can access after arrival at UNM. If you need to change the number, you will need to call UNM IT at 505-277-5757 and you will need your real or UNM-issued temporary Social Security Number that you received in your admission letter. Your NetID will also be your UNM email address (yournetid@unm.edu). Once you set up your UNM NetID it is important to check your UNM email! Important updates and billing information will be sent by the University to your UNM email address.

Note: Pick a Net ID that is appropriate for school and work. The system will suggest one to you. You will NOT be able to change it later.

c) Tuition and Fee Payments

You will not be billed until you register for classes. When you register, you will be billed on the 10th of the month and must pay before the 10th of the following month. You must either pay the amount in full or arrange for a [payment plan](#). Bills can be paid from abroad via [Flywire](#), US bank account direct payment, U.S. bank check, credit card (2.85% fee) or cash. All bills MUST be paid in FULL before you can register for the next semester.

- Remember that scholarships may not appear in your account until after classes begin.
- Please check the payment due dates and be prepared to pay upon arrival. Submitting late payments will incur late fees and service charges.

Note: Cost will depend on your program, scholarships, number of credit hours and course fees for your individual courses. There is also a one-time \$125 fee for international students in the first semester at UNM.

If a sponsor will pay your bill, please send a copy of your financial sponsorship letter to: thirdparty@unm.edu. For more information regarding payment, contact the [Bursar's Office](#) at bursar.unm.edu.

We extend to you our best wishes for a pleasant trip to Albuquerque and trust you will find your stay at UNM to be both challenging and rewarding. We look forward to meeting you and assisting you with your needs as an international student!

VI. Pre-Arrival Checklist

NOW

- ☐ [Attend the GEO Zoom Pre-Arrival Orientation](#) on Friday, December 13th at 8:00 am US Mountain Daylight (Albuquerque) time
- ☐ Set up your [UNM Net ID](#)
- ☐ Join the [GEO New Students Team](#) (wait one day after NetID set up)
- ☐ Talk to your department about their orientation and class registration
- ☐ [Bookmark](#) New ISSS Lobos [Linktree](#) on your phone for fast access to information

NEXT

- ☐ Check your email from iadvisor@unm.edu and [MS Teams](#) messages regularly for updates
- ☐ Research your [housing options](#) (reserve if you will live on campus)
- ☐ Plan to arrive in Albuquerque before Wednesday, January 15th
- ☐ Plan to bring insurance proof with you to GEO check-in
- ☐ Understand and have a plan to pay your [tuition](#) bill
- ☐ Take care of any medical or dental needs for the next 4+ months (including prescriptions)
- ☐ Scan valid passport, visa and I-94 or I-797 approval notice.
- ☐ Re-read all pre-arrival information to be sure you did not miss any details.
- ☐ Upon arrival: Contact GEO to sign up for the soonest GEO check-in

EXTRA CREDIT

- ☐ Meet new students on [Teams](#) and Facebook: [UNMGlobal Community](#) Group
- ☐ Review the **Coming to UNM** section under the **Student** menu on the iss.s.unm.edu website